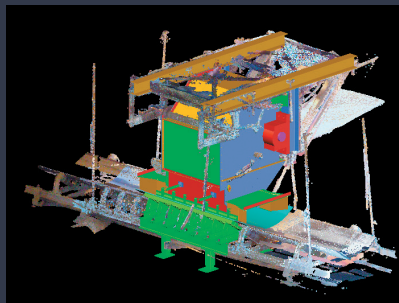


WEST RIVER CONVEYORS | BEHIND THE STEEL SERIES #5

3D LASER SCANNING

High-precision 3D laser scanners capture as-built environments by generating dense point clouds of physical spaces and equipment. The scans, similar to the one pictured below, are commonly used to support conveyor and chute retrofits. By capturing the exact physical layout of existing equipment including chutes, belts, hoppers, and structural supports, data can be converted to CAD and used with Discrete Element Modeling (DEM) software.



Benefits of digital scanning:

- Scans can become a blueprint if drawings are non-existent
- Identify interference from surrounding structures
- Captures misaligned or worn chutes before designing a replacement
- Helps visualize where to add maintenance tools such as access doors and clean out zones



Digital Scanning Services

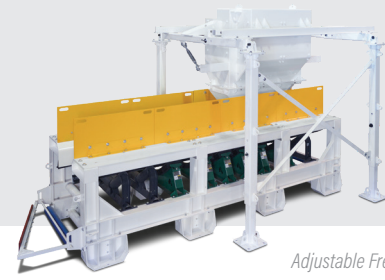
Precision Onsite Assessment Information

West River uses advanced scanning technology to capture accurate dimensional data for analysis, planning, and scope of work development. Our scanner offers millimeter level precision for scanning existing conveyor equipment to provide accurate retrofit modeling, eliminating the need for manual measuring. This scanner creates a permanent 3D record of conveyor assets and works seamlessly with our design tools.

Following the initial assessment, we conduct a value assessment to propose cost-effective solutions tailored to your operational needs. We work closely with clients to establish clear expectations and measurable success metrics, ensuring tangible improvements and a strong return on investment.

Our site assessment deliverables include formal quotations by system with detailed scopes of work. Measurements and scan data will be valuable if we proceed with a project. The anticipated time to complete the assessment is 1-2 days, which includes meetings, inspections, and measurements.





Adjustable Free Standing Discharge Transfer Chute

Value-Added Programs



Did You Know?

With established and reliable vendor relationships, West River offers competitive pricing for new and surplus new systems, ensuring customers receive the highest quality equipment at the best value.

ADDITIONAL SERVICES:

- Laser Shaft Alignment
- Commissioning + Start-Up
- Belt Assessments

For further information, and to learn more about all West River Value-Added Programs + Services, please visit us online at westriverconveyors.com or call 800 332-2781.

A Complete Lifecycle Solution

At West River Conveyors, we don't just build world-class conveyor systems, we partner with you through a number of value-added programs to maximize the long-term performance of your entire operation. Whether you're upgrading one line or planning long-term asset support across multiple sites, we can deliver smart, scalable solutions that grow with your operation.

Our value-added programs include:

- Custom-engineered conveyor systems designed to meet your exact material handling needs
- A comprehensive refurbishment program for existing equipment throughout your facility including part replacement, component repairs, and rebuilds
- Onsite conveyor inspection and assessment services, such as high-precision digital scanning, to enhance your system's performance and longevity

Reliable New, Reconditioned, and Surplus Equipment

West River also offers the unique ability to integrate our surplus equipment into new conveyor systems, providing a cost-effective alternative that reduces capital investment without compromising reliability or performance. We stock common components, brands like ABB, Dodge, Worldwide, Voith, Falk, Rexnord, Hansen, and Sumitomo, that are readily available to sell in a pinch.

Benefits of reconditioned equipment:

- Lower total cost of ownership
- Increased equipment uptime and reliability
- Extended lifecycle of your capital assets
- A single-source partner for both new systems and aftermarket support
- Budget-conscious solutions using high-quality surplus inventory