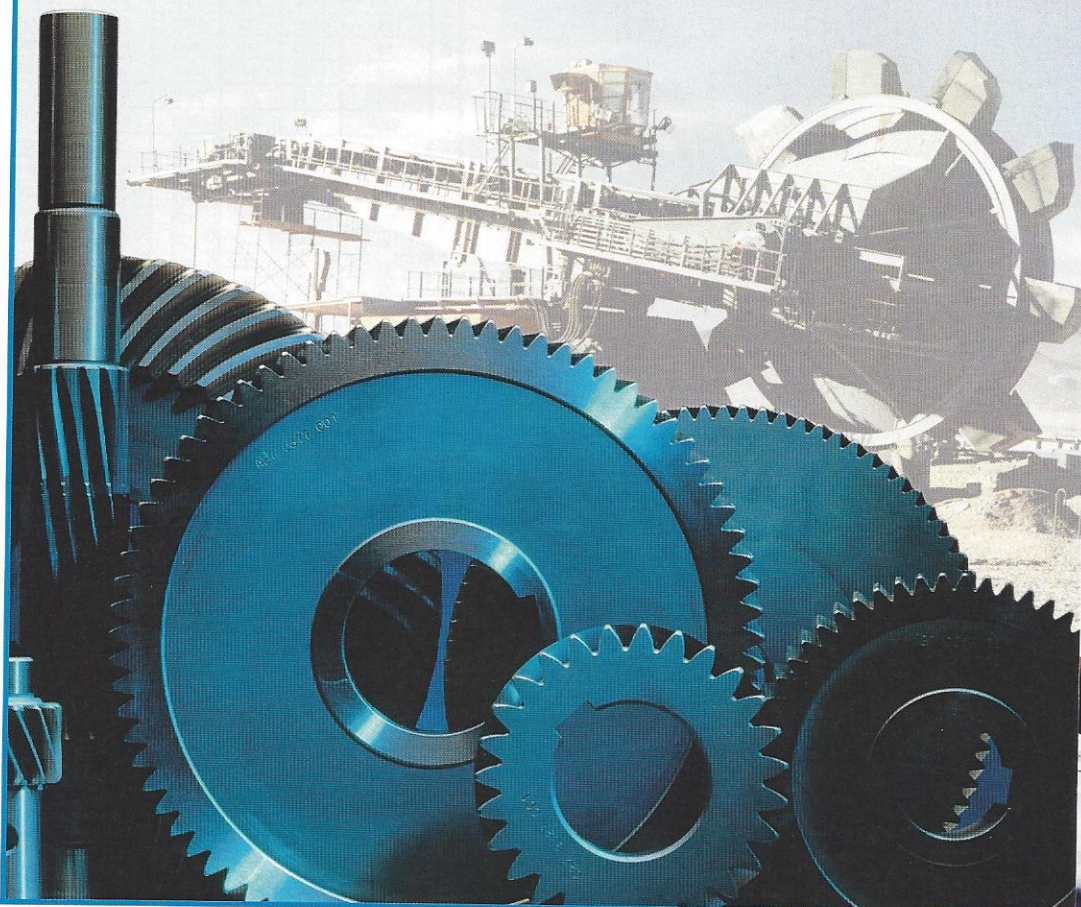


**NEW**

## P4 UniMineR Z Series

getting the job done

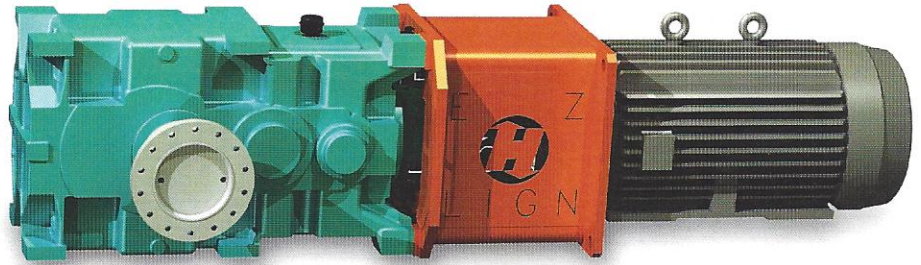




## COMPLETE AND POWERFUL SOLUTIONS FOR THE BULK MATERIAL HANDLING INDUSTRY

*Hansen Transmissions has a long history of solid partnerships with suppliers and end-users in the mining and material handling industry. Thousands of drive packages for conveyors and other associated equipment are installed worldwide, and the versatility and durability of these units is well documented.*

*Our staff visits customers to find out what is expected from our products, asking for recommendations leading to the proper product selection, the required user-friendly features, and future product developments we should consider. The result is a complete range of drive products suited for the rigorous demands of bulk material handling. Thanks to these partnerships with world class suppliers, Hansen Transmissions provides fully integrated drive solutions and services from a single source.*



The Hansen P4 UniMineR Z Series is specifically designed for the mining industry. The housing design is robust for the application and offers versatility for different mounting positions. With a 'flippable' housing and horizontal split line, the UniMineR Z series is the ideal solution for alignment-free drive packages.

| Z                |                  |                              |     |         |                     |                | H                |                              |     |         |                     | R                  |                  |  |  |  | G or H    |  |  |  |  |
|------------------|------------------|------------------------------|-----|---------|---------------------|----------------|------------------|------------------------------|-----|---------|---------------------|--------------------|------------------|--|--|--|-----------|--|--|--|--|
| Gear Unit        |                  |                              |     |         |                     |                | Horizontal LSS   |                              |     |         |                     | Right Angle Shafts |                  |  |  |  | Case Size |  |  |  |  |
| ZHRG             |                  |                              |     |         |                     |                | ZHRH             |                              |     |         |                     |                    |                  |  |  |  |           |  |  |  |  |
|                  | Nominal<br>Ratio | Nominal<br>Speed<br>n1<br>n2 |     | P<br>hp | T<br>1000<br>lbf.in | Exact<br>Ratio | Nominal<br>Ratio | Nominal<br>Speed<br>n1<br>n2 |     | P<br>hp | T<br>1000<br>lbf.in | Exact<br>Ratio     |                  |  |  |  |           |  |  |  |  |
| Double Reduction | 8                | 1750                         | 220 | 1980    | 568                 | 7.948          | 8                | 1750                         | 220 | 2330    | 679                 | 8.082              | Double Reduction |  |  |  |           |  |  |  |  |
|                  | 9                | 1750                         | 195 | 1740    | 549                 | 8.747          | 9                | 1750                         | 195 | 2200    | 705                 | 8.905              |                  |  |  |  |           |  |  |  |  |
|                  | 10               | 1750                         | 175 | 1530    | 570                 | 10.359         | 10               | 1750                         | 175 | 1980    | 717                 | 10.027             |                  |  |  |  |           |  |  |  |  |
|                  | 11.2             | 1750                         | 155 | 1350    | 556                 | 11.400         | 11.2             | 1750                         | 155 | 1800    | 715                 | 11.049             |                  |  |  |  |           |  |  |  |  |
|                  | 12.5             | 1750                         | 140 | 1200    | 557                 | 12.904         | 12.5             | 1750                         | 140 | 1610    | 757                 | 13.069             |                  |  |  |  |           |  |  |  |  |
|                  | 14               | 1750                         | 125 | 1090    | 557                 | 14.201         | 14               | 1750                         | 125 | 1390    | 723                 | 14.400             |                  |  |  |  |           |  |  |  |  |
|                  | 16               | 1750                         | 110 | 885     | 509                 | 15.960         | 16               | 1750                         | 110 | 1200    | 702                 | 16.279             |                  |  |  |  |           |  |  |  |  |
|                  | 18               | 1750                         | 97  | 885     | 560                 | 17.563         | 18               | 1750                         | 97  | 1120    | 725                 | 17.938             |                  |  |  |  |           |  |  |  |  |
| Triple Reduction | 20               | 1750                         | 88  | 920     | 650                 | 19.619         | 20               | 1750                         | 88  | 885     | 642                 | 20.134             | Triple Reduction |  |  |  |           |  |  |  |  |
|                  | 22.4             | 1750                         | 78  | 802     | 652                 | 22.572         | 22.4             | 1750                         | 78  | 885     | 707                 | 22.185             |                  |  |  |  |           |  |  |  |  |
|                  | 25               | 1750                         | 70  | 736     | 654                 | 24.664         | 25               | 1750                         | 70  | 925     | 835                 | 25.069             |                  |  |  |  |           |  |  |  |  |
|                  | 28               | 1750                         | 63  | 641     | 655                 | 28.376         | 28               | 1750                         | 63  | 849     | 882                 | 28.842             |                  |  |  |  |           |  |  |  |  |
|                  | 31.5             | 1750                         | 56  | 591     | 657                 | 30.830         | 31.5             | 1750                         | 56  | 779     | 884                 | 31.516             |                  |  |  |  |           |  |  |  |  |
|                  | 35.5             | 1750                         | 49  | 515     | 658                 | 35.471         | 35.5             | 1750                         | 49  | 679     | 886                 | 36.259             |                  |  |  |  |           |  |  |  |  |
|                  | 40               | 1750                         | 44  | 473     | 659                 | 38.641         | 40               | 1750                         | 44  | 626     | 889                 | 39.394             |                  |  |  |  |           |  |  |  |  |
|                  | 45               | 1750                         | 39  | 413     | 661                 | 44.456         | 45               | 1750                         | 39  | 546     | 891                 | 45.324             |                  |  |  |  |           |  |  |  |  |
|                  | 50               | 1750                         | 35  | 373     | 662                 | 49.329         | 50               | 1750                         | 35  | 502     | 892                 | 49.374             |                  |  |  |  |           |  |  |  |  |
|                  | 56               | 1750                         | 31  | 325     | 663                 | 56.753         | 56               | 1750                         | 31  | 437     | 894                 | 56.805             |                  |  |  |  |           |  |  |  |  |
|                  | 63               | 1750                         | 28  | 257     | 595                 | 64.188         | 63               | 1750                         | 28  | 389     | 883                 | 63.031             |                  |  |  |  |           |  |  |  |  |
|                  | 71               | 1750                         | 25  | 227     | 577                 | 70.635         | 71               | 1750                         | 25  | 343     | 897                 | 72.518             |                  |  |  |  |           |  |  |  |  |

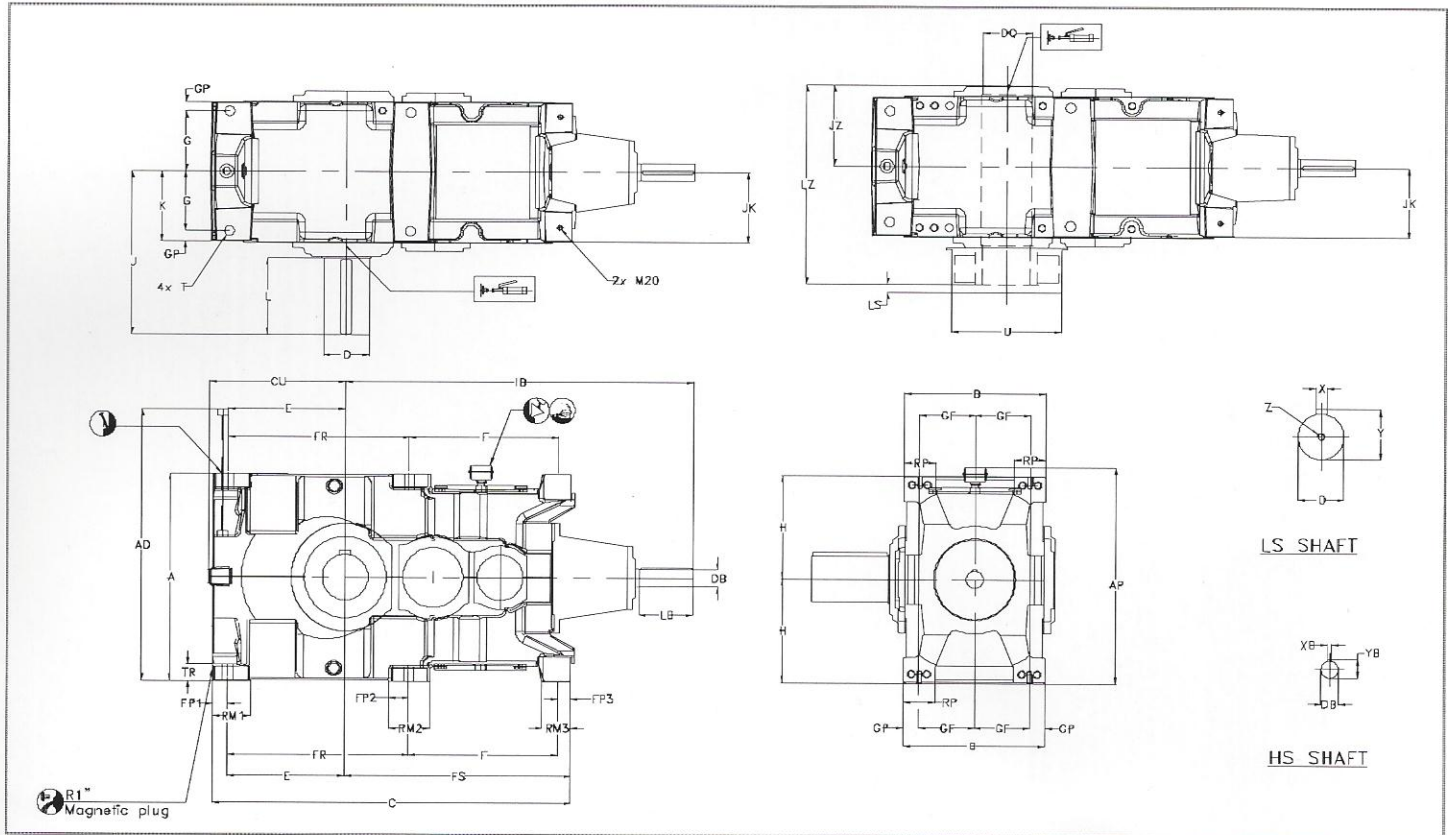
P (hp): Mechanical Power Ratings

T (1000 lbf.in): Torque Ratings at low speed shaft





# P4 UniMineR Z Series



| TYPE  | A     | AD    | AP    | B     | C     | CU    | E     | F     | FP1  | FP2  | FP3  | FR    | FS    | G    |
|-------|-------|-------|-------|-------|-------|-------|-------|-------|------|------|------|-------|-------|------|
| ZHRG2 | 31.72 | 42.25 | 33.09 | 21.65 | 54.88 | 20.90 | 17.91 | 22.91 | 2.33 | 2.99 | 1.97 | 27.68 | 35.33 | 8.86 |
| ZHRH2 | 31.72 | 42.25 | 33.09 | 21.65 | 54.88 | 18.09 | 15.08 | 22.91 | 2.33 | 2.99 | 1.97 | 27.68 | 38.16 | 8.86 |
| ZHRG3 | 31.72 | 42.25 | 33.09 | 21.65 | 54.88 | 20.92 | 17.91 | 22.91 | 2.33 | 2.99 | 1.97 | 27.68 | 34.64 | 8.86 |
| ZHRH3 | 31.72 | 42.25 | 33.09 | 21.65 | 54.88 | 18.09 | 15.08 | 22.91 | 2.33 | 2.99 | 1.97 | 27.68 | 38.16 | 8.86 |

| TYPE  | GF   | GP   | H     | IB    | J     | JK    | JZ    | K     | RM1  | RM2  | RM3  | RP   | T    | TR   |
|-------|------|------|-------|-------|-------|-------|-------|-------|------|------|------|------|------|------|
| ZHRG2 | 8.46 | 2.36 | 15.86 | 48.86 | 24.94 | 10.63 | 12.40 | 10.63 | 5.86 | 6.26 | 4.45 | 4.72 | 1.65 | 1.95 |
| ZHRH2 | 8.46 | 2.36 | 15.86 | 51.69 | 26.94 | 10.63 | 12.60 | 10.63 | 5.86 | 6.26 | 4.45 | 4.72 | 1.65 | 1.95 |
| ZHRG3 | 8.46 | 2.36 | 15.86 | 53.27 | 24.94 | 10.63 | 12.40 | 10.63 | 5.86 | 6.26 | 4.45 | 4.72 | 1.65 | 1.95 |
| ZHRH3 | 8.46 | 2.36 | 15.86 | 56.10 | 26.94 | 10.63 | 12.60 | 10.63 | 5.86 | 6.26 | 4.45 | 4.72 | 1.65 | 1.95 |

| TYPE  | SOLID LOW SPEED SHAFT |        |       |       |         | HOLLOW LOW SPEED SHAFT |      |       |       | HIGH SPEED SHAFT |      |       |       | WEIGHT   |
|-------|-----------------------|--------|-------|-------|---------|------------------------|------|-------|-------|------------------|------|-------|-------|----------|
|       | D                     | L      | X     | Y     | Z - UNC | DQ                     | LS   | LZ    | U MAX | DB               | LB   | XB    | YB    |          |
| ZHRG2 | 7.000                 | 11.750 | 1.750 | 7.639 | 1.250   | 7.480                  | 1.18 | 30.39 | 16.73 | 3.875            | 8.27 | 1.000 | 4.309 | 3870 lbs |
| ZHRH2 | 7.500                 | 13.750 | 1.750 | 8.146 | 1.250   | 8.268                  | 1.57 | 31.26 | 17.72 | 3.875            | 8.27 | 1.000 | 4.309 | 5300 lbs |
| ZHRG3 | 7.000                 | 11.750 | 1.750 | 7.639 | 1.250   | 7.480                  | 1.18 | 30.39 | 16.73 | 2.625            | 8.27 | 0.625 | 2.900 | 3930 lbs |
| ZHRH3 | 7.500                 | 13.750 | 1.750 | 8.146 | 1.250   | 8.268                  | 1.57 | 31.26 | 17.72 | 2.625            | 8.27 | 0.625 | 2.900 | 5360 lbs |

