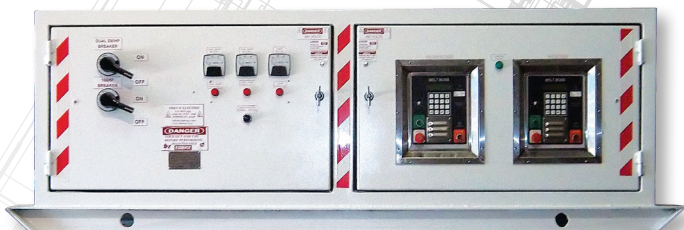


STARTERS



West River Conveyors and Machinery Co. can supply any type of starter to suit your drive needs. Because it takes a large amount of power to start a loaded belt, the proper starter is imperative in any conveyor system. The three most common types of starters are across-the-line, soft start, and variable frequency drive (VFD).

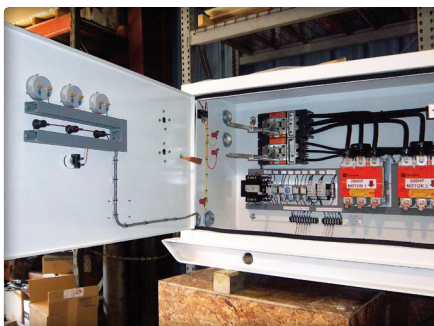
ACROSS-THE-LINE STARTERS

This type of starter is the simplest, most common type because it applies full voltage directly to the motor, resulting in a quick, full torque start.

Benefits:

- works with NEMA designed induction motors
- easy on/off push button
- applies full voltage directly to the motor

Starters are enclosed in metal and suitable for underground mine-duty use. The enclosure has a recessed door with gasket material to help prevent water and dust entry.



SOFT START STARTERS

Unlike across-the-line starters, soft starters are used to start or stop motors by reducing the voltage to each phase of a motor and slowly increasing the voltage until the motor gets up to full voltage at a fixed frequency.

Benefits:

- minimizes wear and tear on conveyor belts, gears and gear-boxes by reducing the torque from the motor
- offers more control over start times and speed control
- larger energy savings than any other kind of starter

VFD STARTERS

A variable frequency drive (VFD) starter controls the frequency of the electrical power supplied to the motor. This type of starter is widely used because it initially applies a low frequency to the motor and avoids the high current that occurs when starting a motor by turning on a switch.

Benefits:

- maximized energy savings — by reducing the speed of the motor, you consume less energy
- low motor starting current
- simple installation

